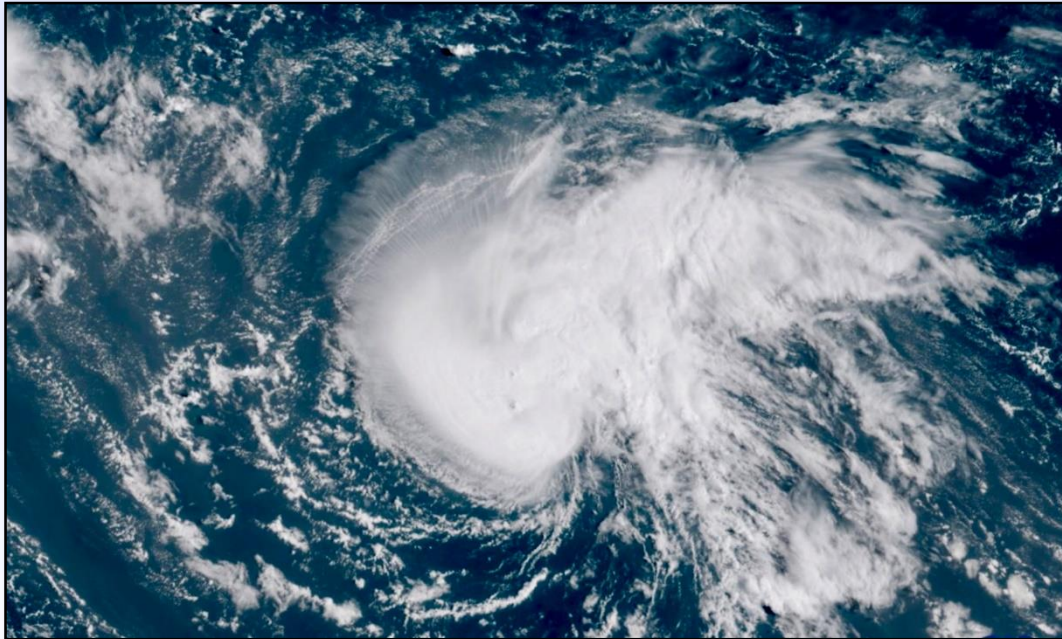


North Carolina State Emergency Operations Center



Hurricane Florence

Wednesday, 12 September 2018 – 0700

State EOC Schedule

Wednesday, September 12, 2018

| | |
|------|--|
| 0700 | Shift Brief |
| 1000 | Executive Summary Published |
| 1130 | Lunch |
| 1600 | Executive Summary & Situation Report Published |
| 1600 | Operational Planning Meeting |
| 1730 | Dinner |
| 1900 | Shift Brief |



Administrative Details

- Event Name:
 - 20180907 Hurricane Florence
- Reported Costs to Date: **\$2,857,137**
- Reminders:
 - Document all costs in Finance Board
 - Document all activities in Significant Events Board
 - Update ESF/Situation Report Board
 - Check In/Out Room to Room

Incident Objectives

State EOC

1. Respond to resource requests and tasking within 30 minutes of assignment.
2. Be prepared to support county response activities.
3. Conduct an active public awareness campaign throughout the severe weather event.
4. Develop a plan for post-event impact assessment and recovery activities.
5. Monitor resource use and develop a demobilization plan for the release of resources as the situation allows.

Emergency Services

1. Coordinate with SERT partners to mobilize life safety resources when requested throughout event.
2. Maintain catalog of available state law enforcement mission packages to support local safety and security measures throughout the event.

RCC's

1. Support local government preparation, response, and recovery efforts for the duration of the event. Mission priorities are life saving, rescue, evacuation, life sustaining power generation and transportation and traffic control.
2. Review and validate assignment of mission requests received by RCC from the State EOC. Execute missions within prescribed timelines.
3. Track all RCC resources and expenditures.
4. Manage conference calls, produce branch tactical plan, situation reports and manage resources.

Business EOC

1. Maintain situational awareness of state and private sector partner status and actions throughout the event.
2. Process Re-Entry Certifications within 30 minutes throughout the event.

Incident Objectives

Communications

1. Efficiently manage statewide talkgroups for effective allocation in support of anticipated local, regional, and state level operations.
2. Proactively evaluate primary and auxiliary operational communications needs based on forecasted weather, anticipated communication degradations, and anticipated surges in operations.
3. Coordinate with SERT partners to quickly mobilize communication resources when requested throughout the event.

Infrastructure

1. Monitor and disseminate information to SERT partners and counties regarding power outages/disruptions/restorations and road closures throughout the event.
2. Coordinate with Risk Management to evaluate impacts to structures and disseminate relevant information to SERT partners and county officials throughout the event.

Risk Management

1. Develop and disseminate impact forecast and analysis products for impacted areas.
2. Monitor and maintain WebEOC for resource requests.

Logistics

1. Respond to resource requests and tasking within 30 minutes of assignment.
2. Provide equipment and commodities in support of impacted communities as quickly as possible.
3. Coordinate travel, lodging and meals for State EOC staff as needed.

Human Services

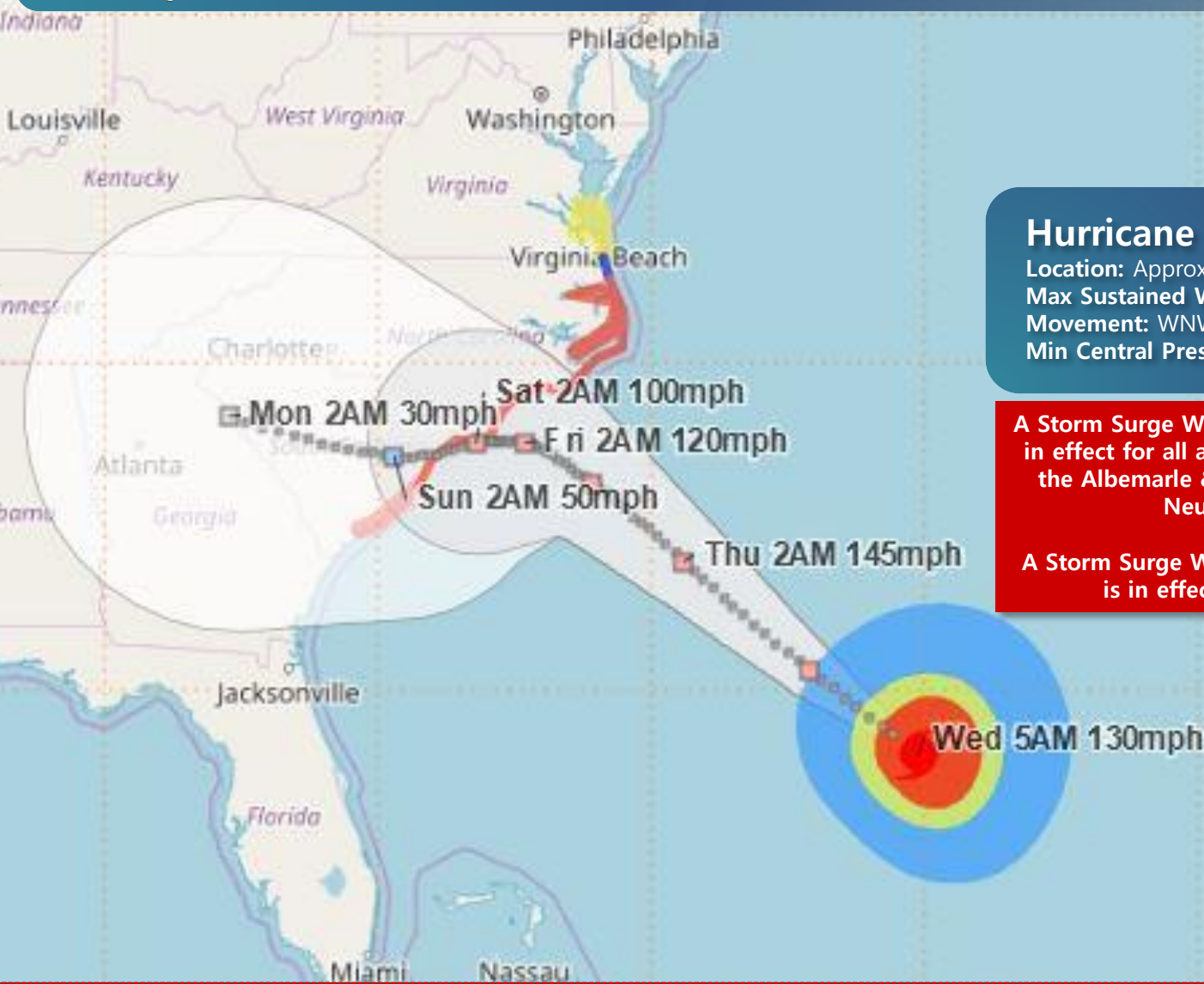
1. Execute plans for mass care and sheltering of evacuees, affected persons, pets and commercial animals.

Weather



HURRICANE FLORENCE

September 12, 2018 – 5AM



Hurricane Florence [5AM WED]

Location: Approx. 575 miles SE of Cape Fear, NC
Max Sustained Winds: 130 MPH
Movement: WNW at 17 MPH
Min Central Pressure: 27.94" (946 mb)

A Storm Surge Warning and a Hurricane Warning is in effect for all areas south of Duck, NC including the Albemarle & Pamlico Sounds as well as the Neuse & Pamlico Rivers.

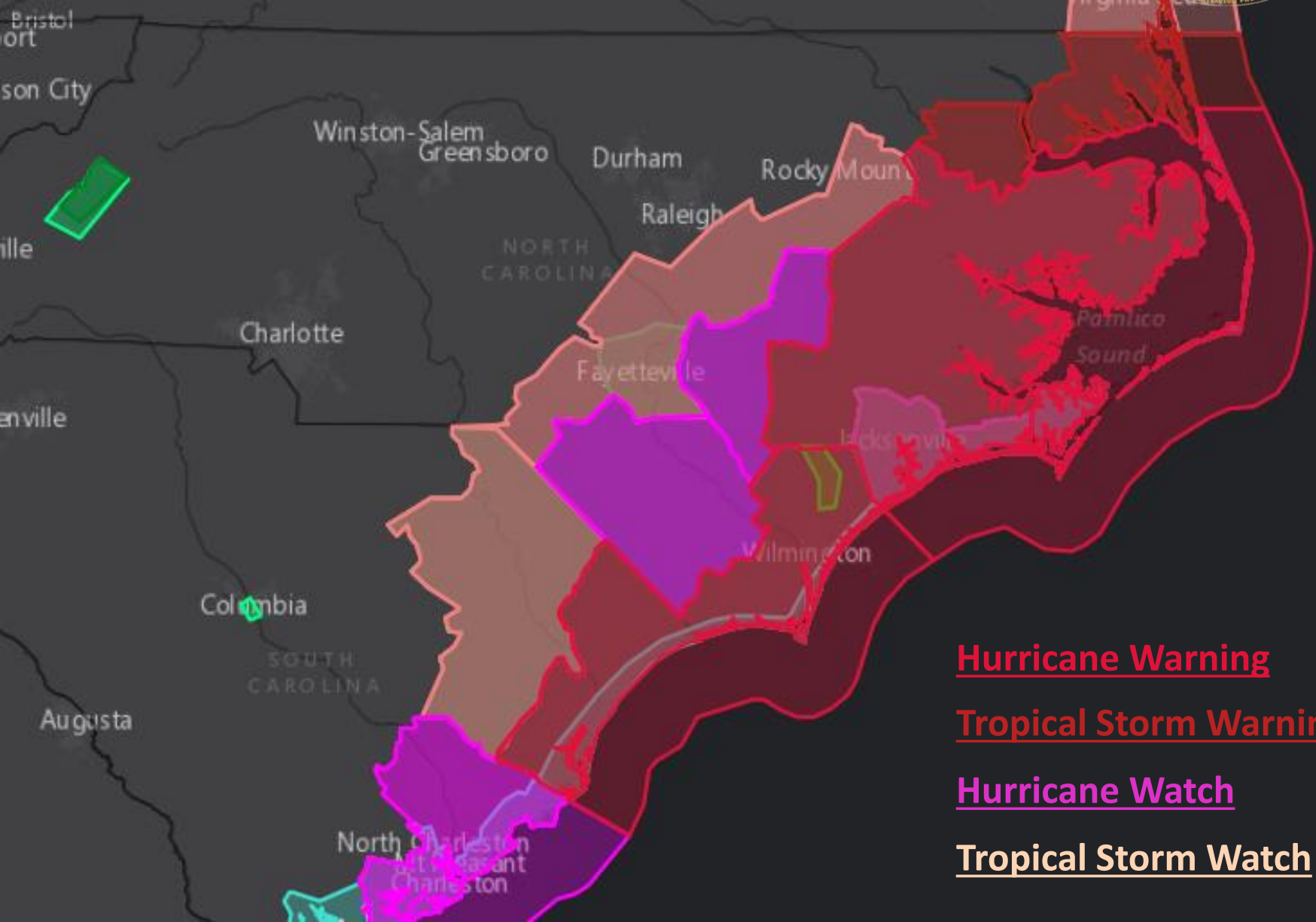
A Storm Surge Watch and Tropical Storm Warning is in effect for areas north of Duck.

| Wind Speed | | |
|------------------|-----------------------|------------------|
| ≥ 34 kt / 39 mph | ≥ 50 kt / 58 mph | ≥ 64 kt / 74 mph |
| Tropical Storm | Strong Tropical Storm | Hurricane |

The NHC Track Forecast Cone is NOT an Impact Cone
Significant impacts will be felt far from the center of the storm

CURRENT WATCHES

September 12, 2018 – 5PM



Hurricane Warning

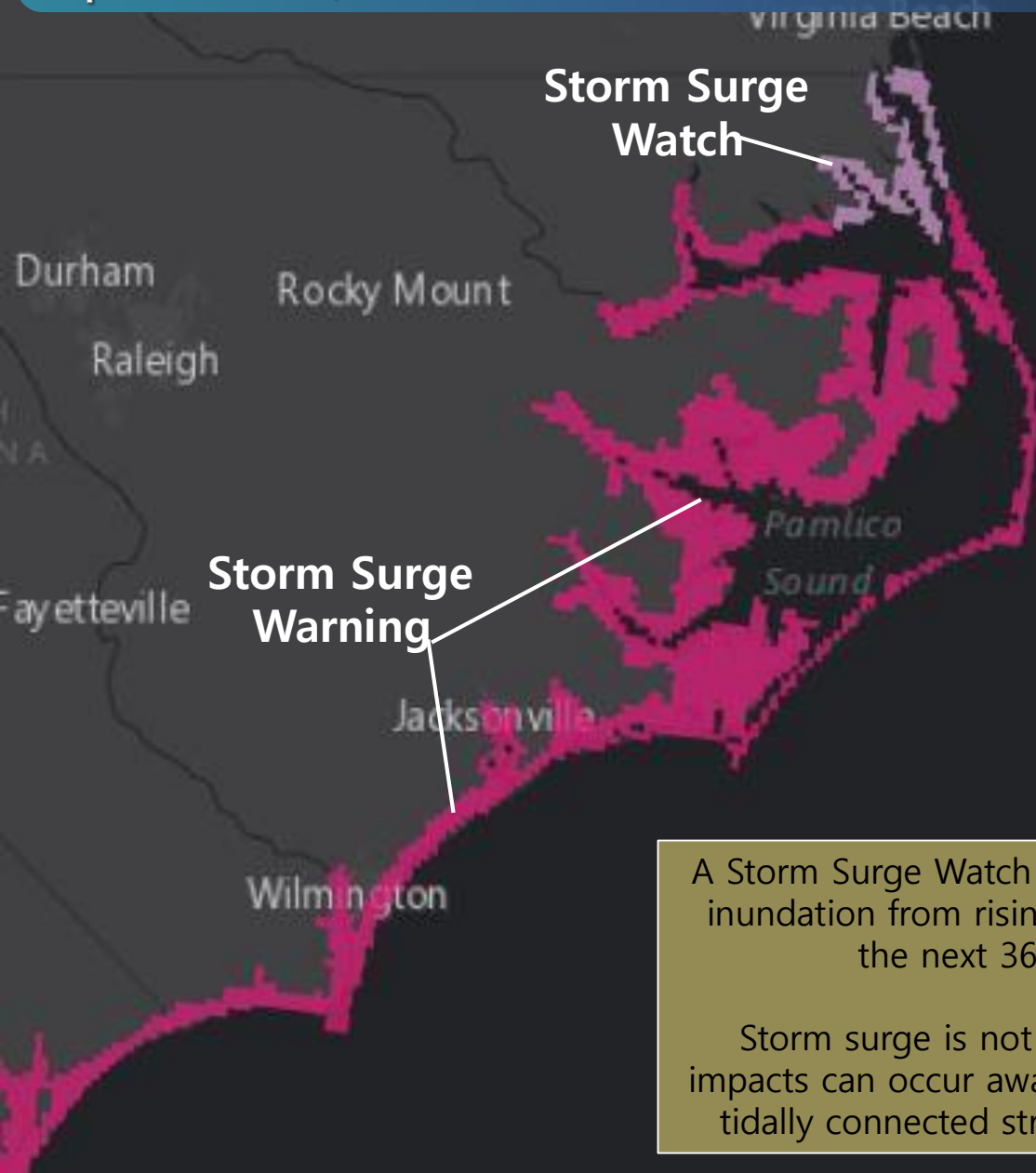
Tropical Storm Warning

Hurricane Watch

Tropical Storm Watch

STORM SURGE WARNING/WATCH

September 12, 2018 – 5AM



**Storm Surge
Watch**

**Storm Surge
Warning**

Potential Storm Surge Amounts:

6-9' South of Cape Fear

**9-13' Cape Fear - Cape Lookout and
along the Neuse, Pamlico, Pungo, &
Bay Rivers**

6-9' Cape Lookout - Ocracoke Inlet

4-6' North of Ocracoke Inlet

A Storm Surge Watch means there is a danger of life-threatening inundation from rising water moving from the coastline, during the next 36 hours in the indicated locations.

Storm surge is not just an ocean front phenomenon. Surge impacts can occur away from the coast, especially along/near any tidally connected streams, creeks, rivers, waterways, and bays.

HAZARDS SUMMARY

HURRICANE FLORENCE

September 12, 2018 – 5AM



| HAZARD | DETAILS | IMPACTS | THREAT |
|------------------|--|--|-----------------|
| Storm Surge | S of Cape Fear: 6-9' Cape Fear-Cape Lookout: 9-13' (Neuse, Pamlico, Bay, Pungo Rivers) Cape Lookout-Ocracoke Inlet: 6-9' N of Ocracoke Inlet: 4-6' | Very dangerous inundation amounts are expected along the NC coast Thu-Sat. | Extreme |
| Inland Flooding | Coastal NC: 20-30" (isolated 40") Central, Western, NE NC: 5-10" (isolated 20") | Sig. threat to life and property; impassable roads; road wash-outs. Heavy rain will begin Thu and could continue through the weekend. Longer-term river flooding likely, and mountain landslides possible. | Extreme |
| Damaging Winds | Hurricane-Force winds are likely near the coast Tropical Storm-Force winds likely across much of state | Significant downed trees and widespread/prolonged power outages across the state; significant structure damage possible as Florence near the coast | Extreme |
| Tornadoes | A few tornadoes are possible Thu and Fri, across eastern NC. Tornadoes in tropical systems are typically short-lived and weak. | | Moderate |
| Marine & Coastal | Life-threatening surf and rip currents will continue for much of the week. | | Extreme |

Threat Levels:

None

Low

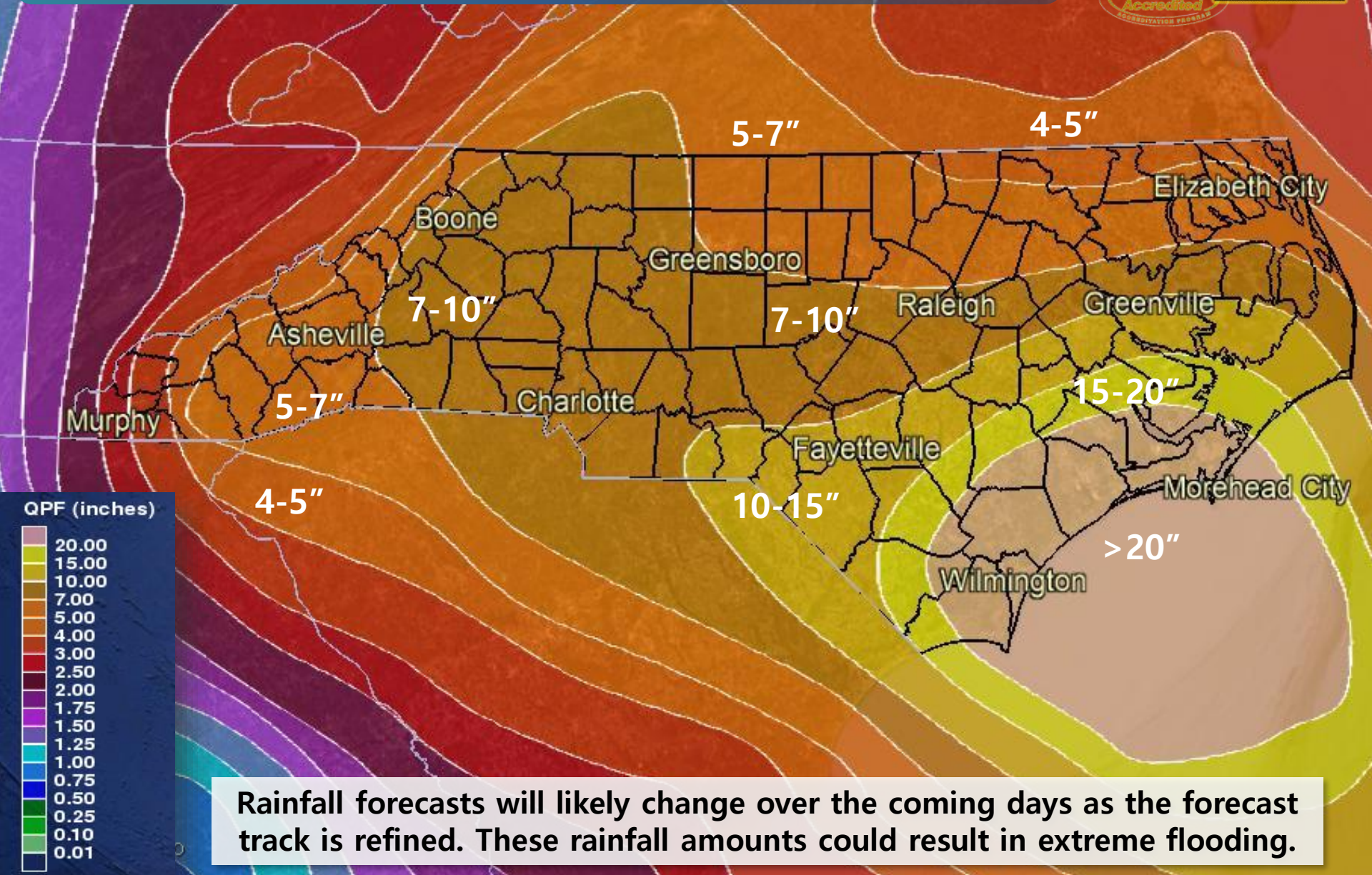
Moderate

High

Extreme

7-DAY RAINFALL FORECAST

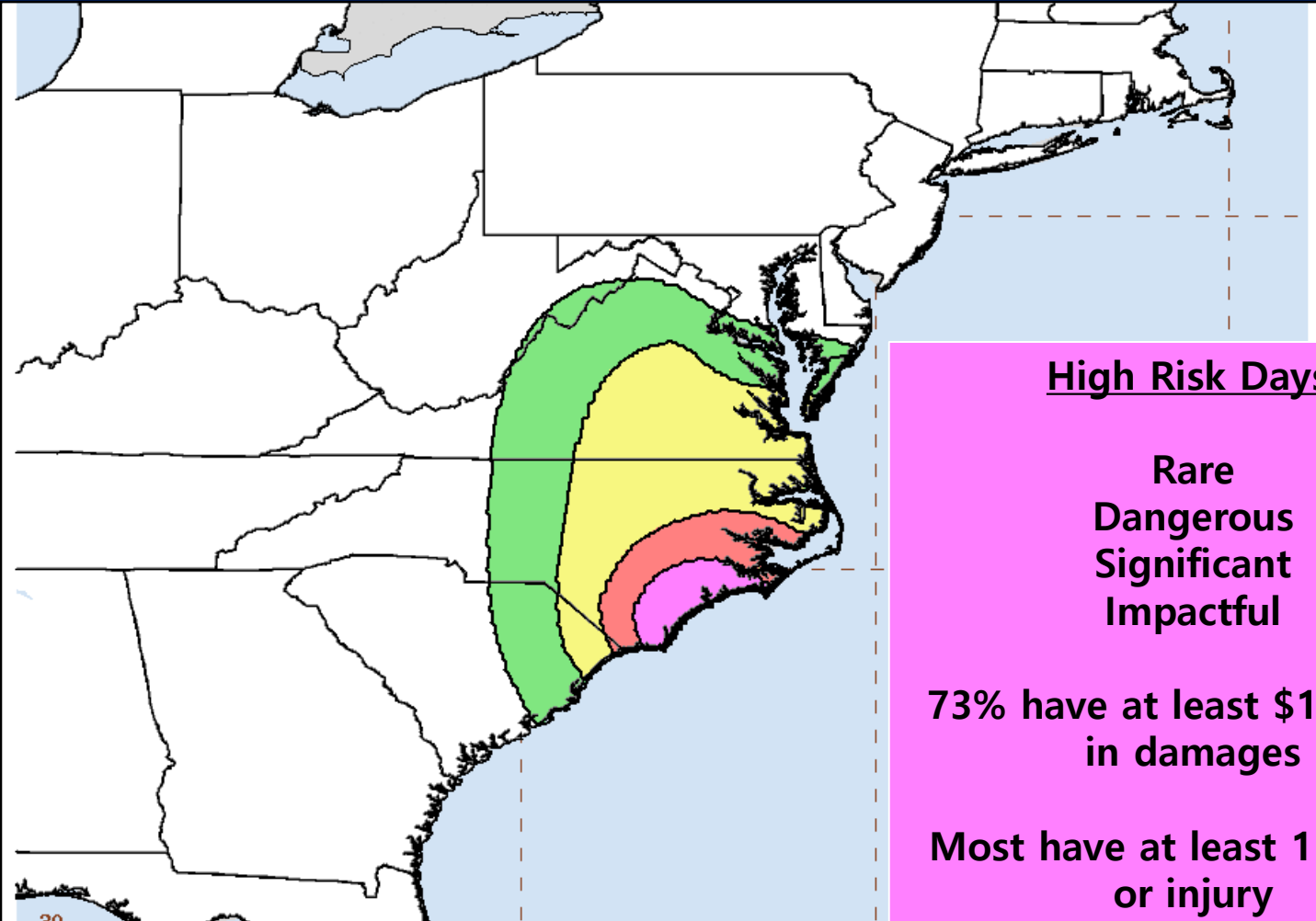
8AM September 12, 2018 to 8AM September 19, 2018



Rainfall forecasts will likely change over the coming days as the forecast track is refined. These rainfall amounts could result in extreme flooding.

FLASH FLOODING POTENTIAL

Thursday & Friday



High Risk Days:

Rare
Dangerous
Significant
Impactful

73% have at least \$1 million in damages

Most have at least 1 fatality or injury

Hurricane Florence
Day 3 Excessive Rainfall Outlook
Created 4:46 AM EDT Wed Sep 12 2018
Valid 8:00 AM EDT Fri Sep 14 2018
through 8:00 AM EDT Sat Sep 15 2018
NOAA/NWS/NCEP/WPC

| Risk of flash flooding | |
|------------------------|---------------|
| 5%: Marginal | 20%: Moderate |
| 10%: Slight | 50%: High |

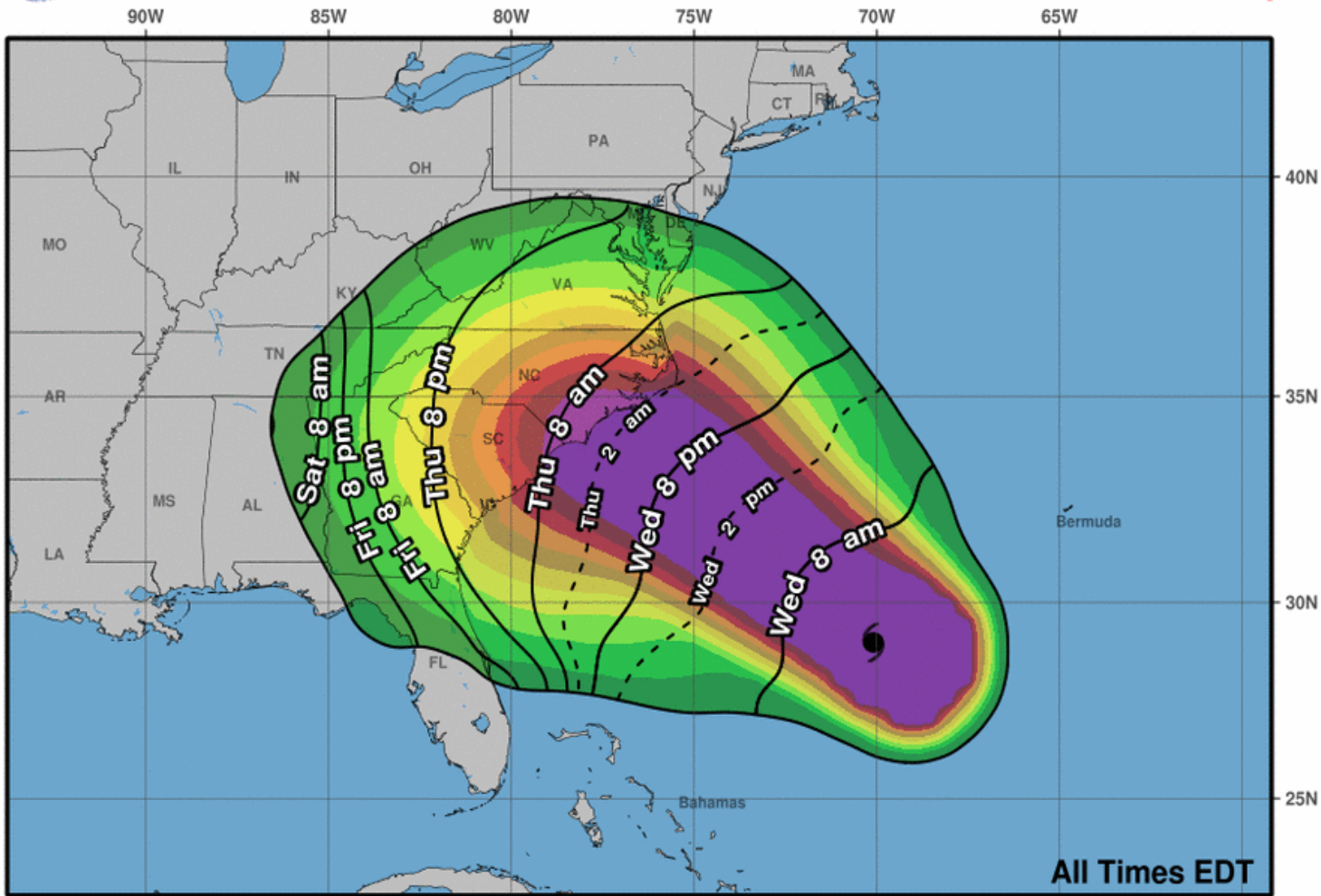


ARRIVAL OF TS FORCE WINDS

September 12, 2018 – 5AM



Earliest Reasonable Arrival Time of Tropical-Storm-Force Winds



Hurricane Florence
Wed. Sep. 12, 2018 5 am EDT
Advisory 52

Storm Location ○ < 34 kt (39 mph)
& ○ 34-63 kt (39-73 mph)
Wind Speed ● ≥ 64 kt (74 mph)

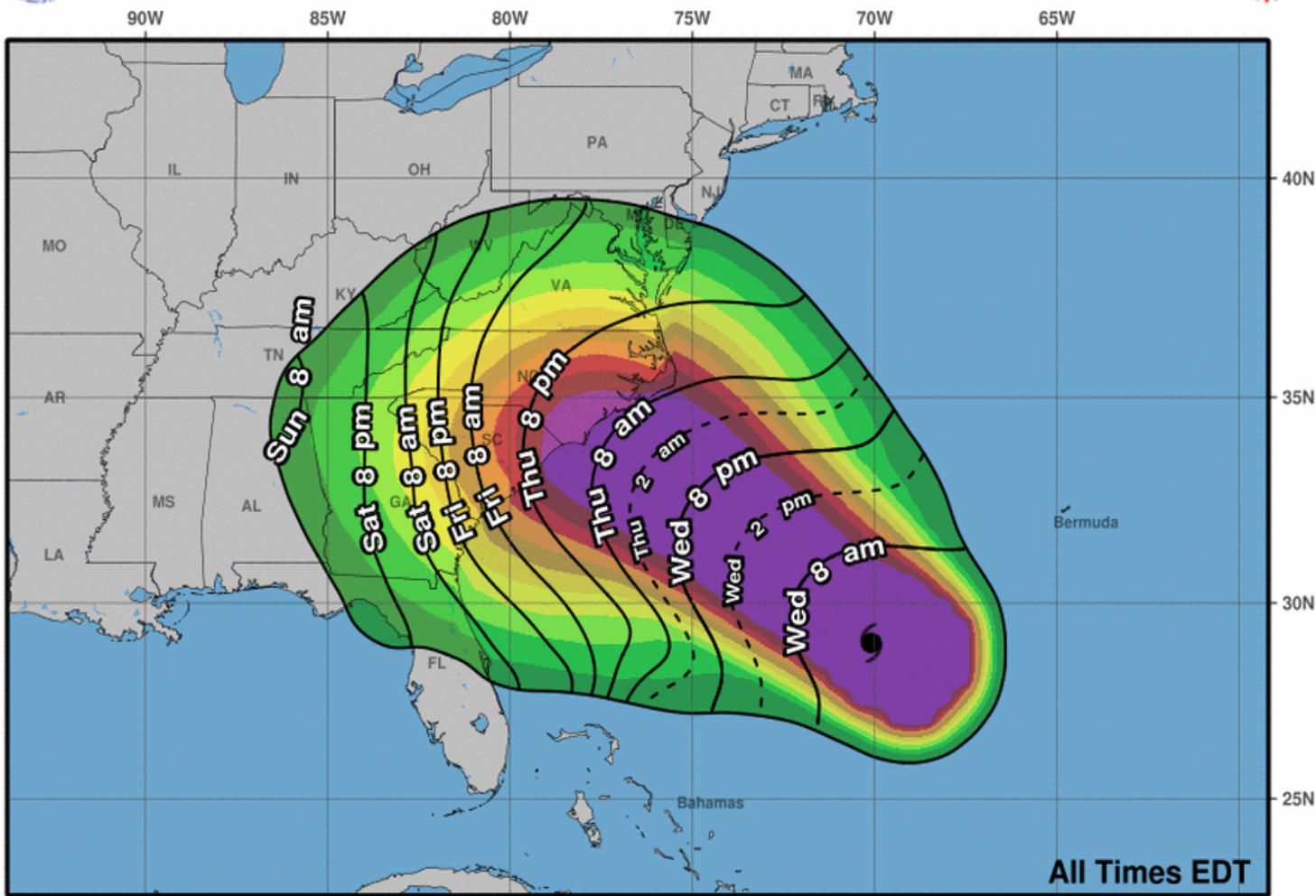
5-day chance of receiving sustained 34+ kt (39+ mph) winds
5 10 20 30 40 50 60 70 80 90 100 %

ARRIVAL OF TS FORCE WINDS

September 12, 2018 – 5AM



Most Likely Arrival Time of Tropical-Storm-Force Winds



Hurricane Florence

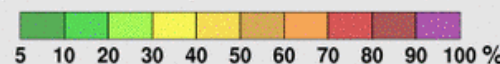
Wed. Sep. 12, 2018 5 am EDT

Advisory 52

Storm Location & Wind Speed

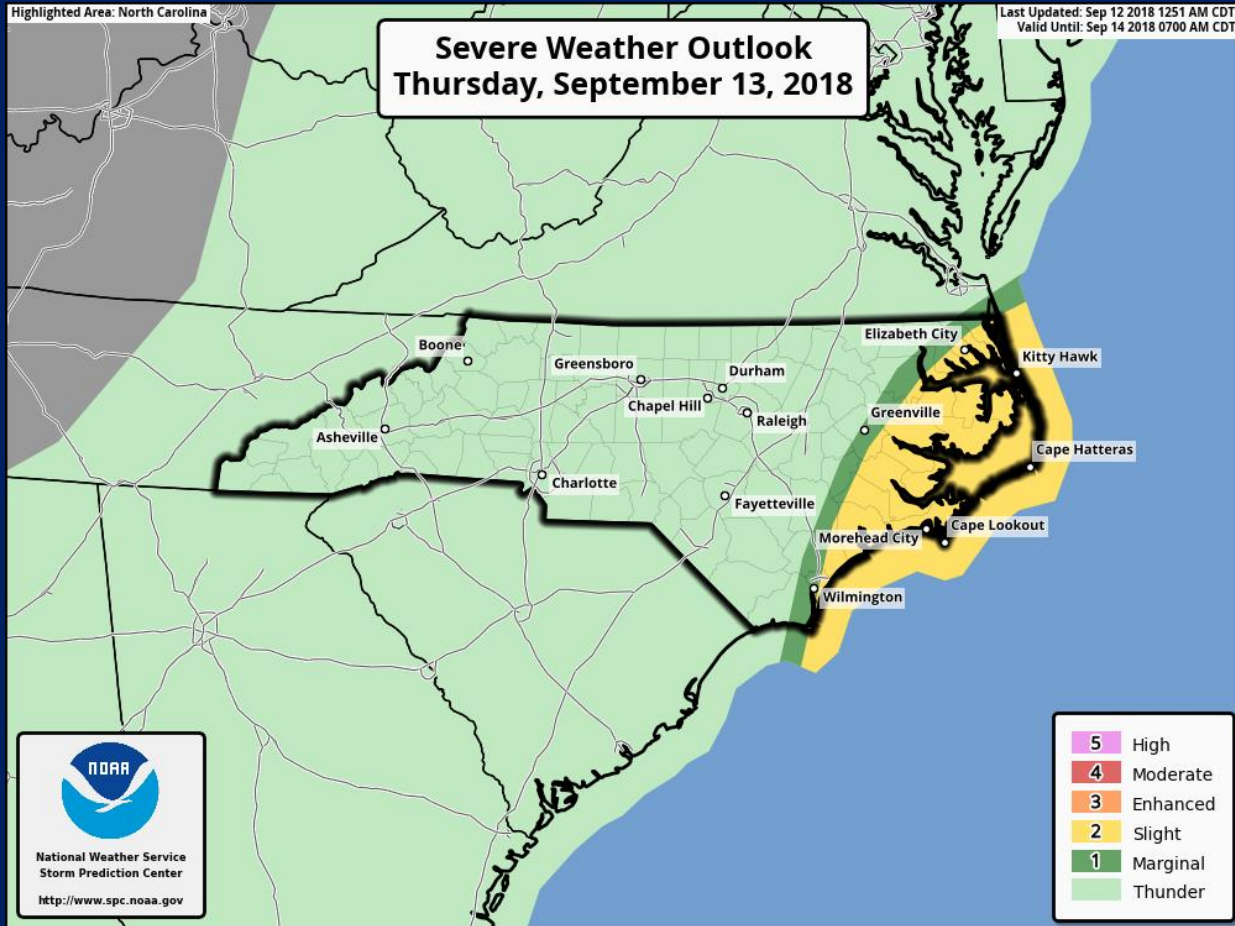
- < 34 kt (39 mph)
- 34-63 kt (39-73 mph)
- ≥ 64 kt (74 mph)

5-day chance of receiving sustained 34+ kt (39+ mph) winds



THURSDAY'S SEVERE STORM THREAT

STORM PREDICTION CENTER (VALID 8AM 9/13/18 – 8AM 9/14/18)



| THUNDERSTORMS (no label) | 1 - MARGINAL (MRGL) | 2 - SLIGHT (SLGT) |
|--|--|--|
| No severe* thunderstorms expected | Isolated severe thunderstorms possible | Scattered severe storms possible |
| Lightning/flooding threats exist with <u>all</u> thunderstorms | Limited in duration and/or coverage and/or intensity | Short-lived and/or not widespread, isolated intense storms possible |
| | | |
| <ul style="list-style-type: none"> Winds to 40 mph Small hail | <ul style="list-style-type: none"> Winds 40-60 mph Hail up to 1" Low tornado risk | <ul style="list-style-type: none"> One or two tornadoes Reports of strong winds/wind damage Hail ~1", isolated 2" |
| 3 - ENHANCED (ENH) | 4 - MODERATE (MDT) | 5 - HIGH (HIGH) |
| Numerous severe storms possible | Widespread severe storms likely | Widespread severe storms expected |
| More persistent and/or widespread, a few intense | Long-lived, widespread and intense | Long-lived, very widespread and particularly intense |
| | | |
| <ul style="list-style-type: none"> A few tornadoes Several reports of wind damage Damaging hail, 1 - 2" | <ul style="list-style-type: none"> Strong tornadoes Widespread wind damage Destructive hail, 2" + | <ul style="list-style-type: none"> Tornado outbreak Derecho |

A few tornadoes are possible Thursday and Thursday night across portions of Eastern NC.

Tornadoes in tropical systems are typically weak and short-lived, but often do not offer much warning time.

HURRICANE FLORENCE

SEPTEMBER 12, 2018 – 5AM

ReadyNC

EMAP
Accredited
COORDINATING PROGRAM



Key Takeaways:

- **Life-Threatening Impacts Will Extend Far From The Storm's Center:** Despite the southward shift in track, widespread and extreme impacts from heavy rain, storm surge, and wind are still expected.
- **Rain:**
 - Coastal NC: 20-30"; isolated totals to 40"
 - Central, Western, & Northeastern NC: 5-10"; isolated totals to 20"
- **Storm Surge:**
 - Cape Fear – Cape Lookout (Pamlico, Neuse, Pungo, Bay Rivers): 9-13'
 - South of Cape Fear: 6-9'
 - Cape Lookout – Ocracoke Inlet: 6-9'
 - North of Ocracoke Inlet: 4-6'
- **Wind:**
 - Hurricane-force winds are likely across portions of Coastal NC
 - Tropical Storm-force winds are likely across much of the state



Situation Report



County Impacts

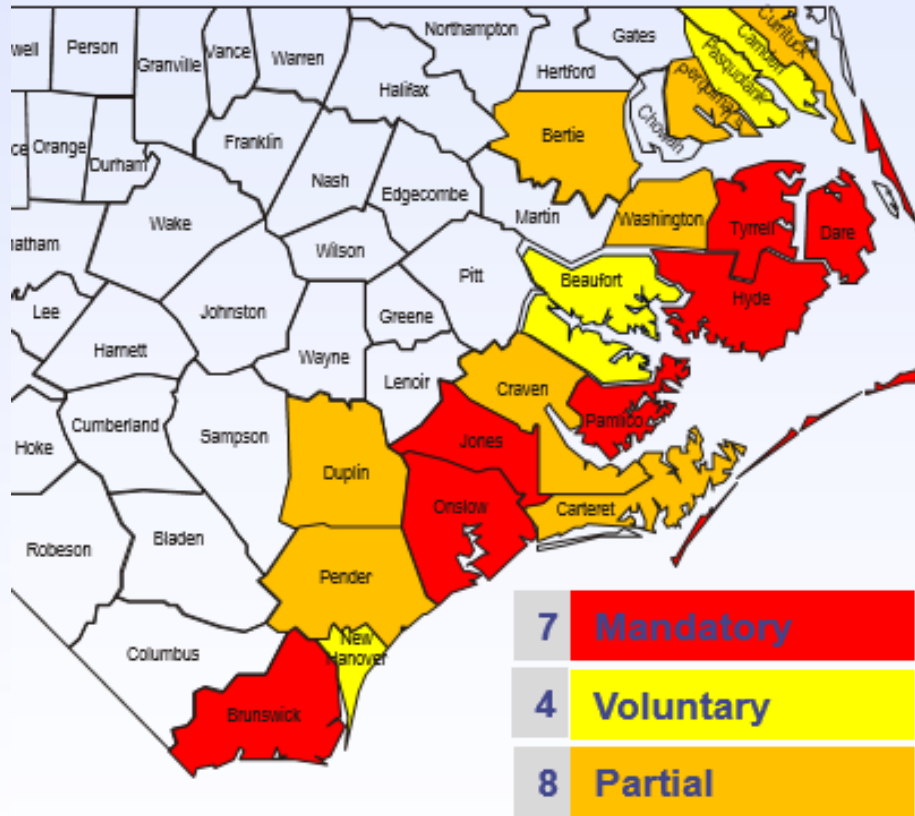
State of Emergency (36):

- 25 in Eastern Branch
- 10 in Central Branch
- 1 in Western Branch

School Closings: 26 Districts closed, 17 have an early release.

Evacuations

As of: Sept 12, 7:00 AM



Executive Order #54 – Mandatory Evacuation
for all islands in North Carolina

EMAC

| EMAC REQ- A # | Assisting State | Resource | Status | Arrival Date | Arrival Time | Departure Date | # of Personnel | Work Location |
|------------------|--------------------|---------------------------------------|------------|--------------|--------------|----------------|----------------|---------------|
| 8043 | MA | 2 Person EMAC A-Team | Active | 9/9/2018 | 18:30 | 9/21/2018 | 2 | SEOC |
| 8064 | VT | Type 1 Swift Water Rescue | Responding | 9/12/2018 | 3:00 | 9/20/2018 | 17 | TBD |
| 8065 | | Type 3 Urban Search & Rescue (3) | Open | | | | | |
| 8068 | IN | Type 1 Swift Water Rescue teams(1) | Responding | 9/12/2018 | 3:00 | 9/20/2018 | 18 | TBD |
| 8069 | LA | Type 3 EOC Overhead Teams (1) | Responding | 9/12/2018 | 16:00 | 9/26/2018 | 4 | TBD |
| 8079 | OK | UH-60 Aircraft with HART Capabilities | Accepted | 9/12/2018 | | | | |
| 8080 | | CH-47 General support Aircraft | Open | | | | | |
| 8086 | TN | Site on Wheels (SOW) (2) | Accepted | | | | | |
| 8088 | IN | Type 1 Swift Water Rescue | Responding | 9/12/2018 | 3:00 | 9/20/2018 | 16 | |
| 8089 | NH | Type 1 Swift Water Rescue | Accepted | | | | | |
| 8090 | OK | Type 3 EOC Overhead Teams (1) | Accepted | 9/12/2018 | | 9/25/2018 | 5 | TBD |
| 8092 | OK | 2 Person EMAC A-Team | Accepted | 9/12/2018 | 10:30 | 9/25/2018 | 2 | SEOC |
| 8094 | FL | Ambulance Strike Teams (5) | Responding | 9/11/2018 | 22:00 | 9/18/2018 | | |
| 8095 | TN | Ambulance Strike Teams (2) | Responding | 9/12/2018 | 0:00 | 9/18/2018 | | |
| 8097 | FL | Type 3 EOC Overhead Team (3) | Offer | 9/12/2018 | | 9/27/2018 | 12 | TBD |
| 8099 | AL | Type 1 Site on Wheels (SOW) | Accepted | | | | | |
| 8101 | FL | Nurse Strike teams (26 on HOLD) | Accepted | | | | | |

EMAC

| EMAC REQ- A # | Assisting State | Resource | Status |
|------------------|--------------------|---------------------------------------|----------|
| 8106 | | Type 3 EOC Overhead Team (5) | Open |
| 8107 | OH | Type 1 Swift Water Rescue (1) | Accepted |
| 8108 | KY | Type 1 Swift Water Rescue (1) | Offer |
| 8109 | | Type 1 Swift Water Rescue (5) | Offer |
| 8110 | LA | Communications Officer (PIO) (1) | Offer |
| 8111 | | Communications Officer (PIO) (2) | Open |
| 8114 | | Type 3 EOC Overhead Team (5) | Open |
| 8116 | IL | UH-60 Aircraft with HART Capabilities | Open |
| 8117 | IL | CH-47 General support Aircraft | Open |
| 8118 | | Type 3 EOC Overhead Team (3) | Open |
| 8120 | CT | UH-60 Aircraft with HART Capabilities | Open |
| 8121 | NE | UH-60 Aircraft with HART Capabilities | Open |
| 8122 | CT | CH-47 General support Aircraft | Open |
| 8123 | MS | CH-47 General support Aircraft | Open |
| 8124 | | UH-60 Aircraft with HART Capabilities | Open |
| 8125 | GA | UH-60 Aircraft with HART Capabilities | Open |
| 8126 | | Nurse Strike teams (26 on HOLD) | Open |

Overall SERT Response

| Location/Resource | Status | Level |
|--------------------------|-----------|-------|
| State EOC | Activated | 2 |
| Business EOC | Activated | Y |
| Recovery EOC | Activated | Y |
| Joint Information Center | Activated | Y |
| RCC East | Activated | Y |
| RCC Central | Activated | Y |
| RCC West | Activated | Y |
| EMAC | Activated | Y |

| Federal | Activated |
|----------------------------|-----------|
| FEMA IMAT | Y |
| FEMA Liaison Officer | Y |
| FEMA Incident Support Base | Y |
| FCO | Y |

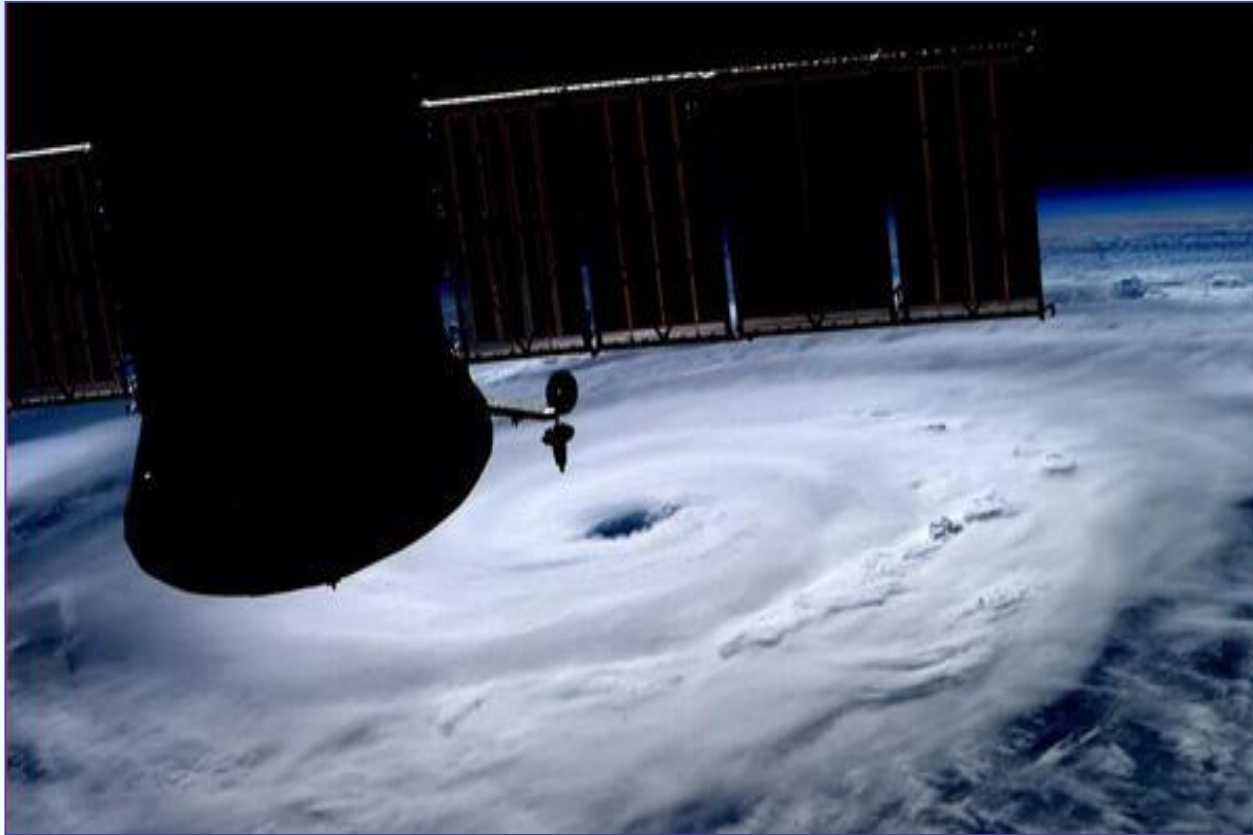
| Federal Declaration |
|--------------------------|
| 9/10/2018 – FEMA-3401-EM |

| Date | Executive Orders |
|-----------|---|
| 9/7/2018 | #51 - State of Emergency Declaration |
| 9/7/2018 | #52 - Temporary Suspension of Motor Vehicle Regulations |
| 9/10/2018 | #53 – Fuel Transportation Waiver |
| 9/11/2018 | #54 – Mandatory Evacuation for Coastal Islands |

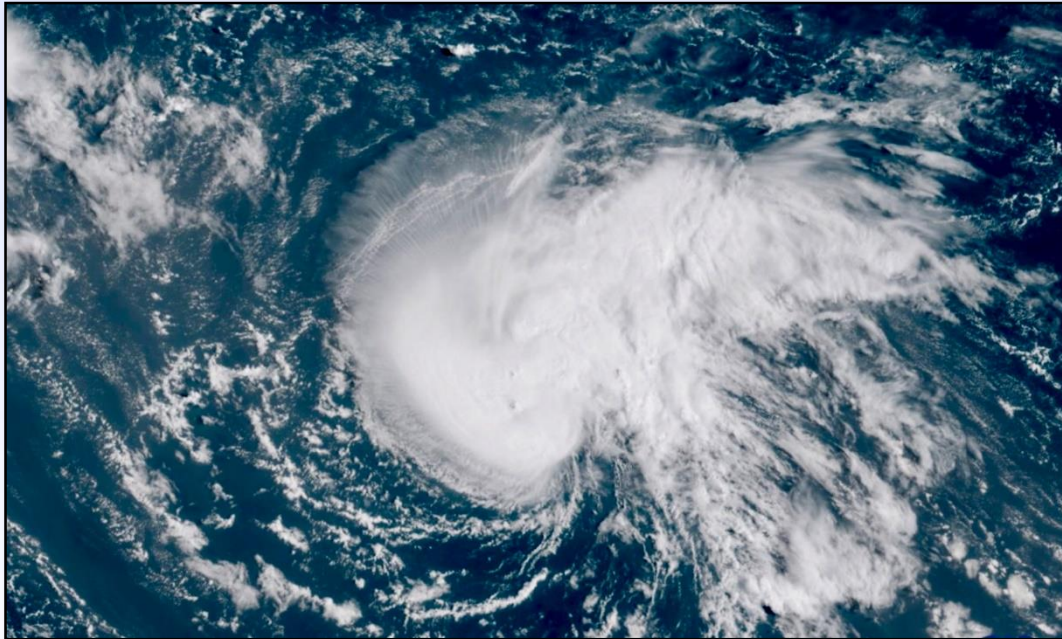
Around the Room

- Operations
- Logistics
- Recovery
- Risk Management
- Resiliency
- Administration/Finance
- Joint Information Center
- Business EOC
- FEMA

SERT Leader Guidance



North Carolina State Emergency Operations Center



Hurricane Florence

Wednesday, 12 September 2018 – 0700